

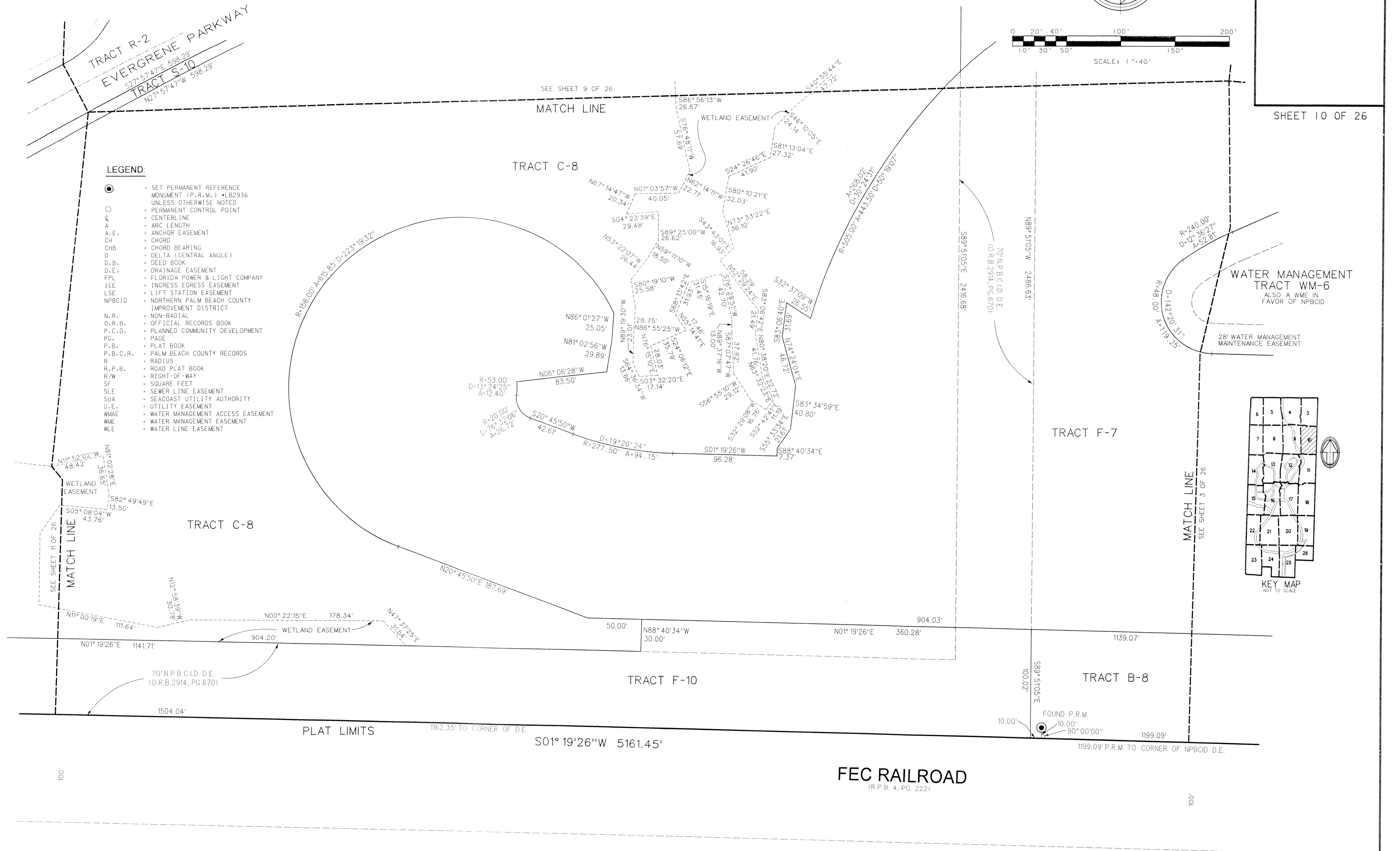
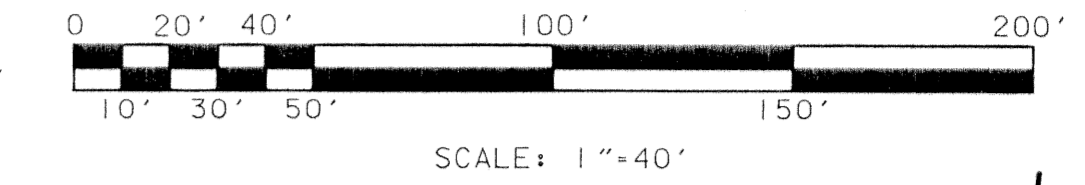
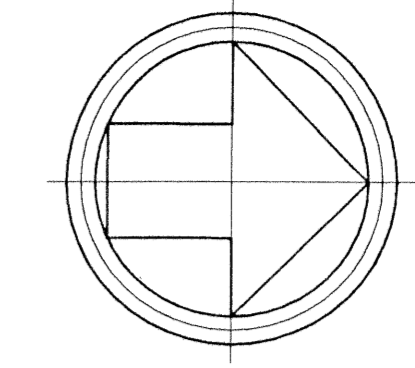
CARNAHAN · PROCTOR · CROSS, INC.

CONSULTING ENGINEERS · SURVEYORS · PLANNERS

6101 WEST ATLANTIC BOULEVARD, MARGATE, FLORIDA 33063
PHONE: 954-972-3959 FAX: 954-972-4178

EVERGRENE PLAT TWO

A REPLAT OF A PORTION OF TRACT "A", "EVERGRENE" (P.B. 93, PGS. 117-119, P.B.C.R.)
CITY OF PALM BEACH GARDENS, PALM BEACH COUNTY, FLORIDA



LEGEND:

- - SET PERMANENT REFERENCE MONUMENT (P.R.M.) • LB2936 UNLESS OTHERWISE NOTED
- - PERMANENT CONTROL POINT
- ⊙ - CENTERLINE
- A - ARC LENGTH
- A.E. - ANCHOR EASEMENT
- CH - CHORD
- CHB - CHORD BEARING
- D - DELTA (CENTRAL ANGLE)
- D.B. - DEED BOOK
- D.E. - DRAINAGE EASEMENT
- FPL - FLORIDA POWER & LIGHT COMPANY
- IEE - INGRESS EGRESS EASEMENT
- LSE - LIFT STATION EASEMENT
- NPBCID - NORTHERN PALM BEACH COUNTY IMPROVEMENT DISTRICT
- N.R. - NON-RADIAL
- O.R.B. - OFFICIAL RECORDS BOOK
- P.C.D. - PLANNED COMMUNITY DEVELOPMENT
- PG. - PAGE
- P.B. - PLAT BOOK
- P.B.C.R. - PALM BEACH COUNTY RECORDS
- R - RADIUS
- R.P.B. - ROAD PLAT BOOK
- R/W - RIGHT-OF-WAY
- SF - SQUARE FEET
- SLE - SEWER LINE EASEMENT
- SUA - SEACOAST UTILITY AUTHORITY
- U.E. - UTILITY EASEMENT
- WMAE - WATER MANAGEMENT ACCESS EASEMENT
- WME - WATER MANAGEMENT EASEMENT
- WLE - WATER LINE EASEMENT

